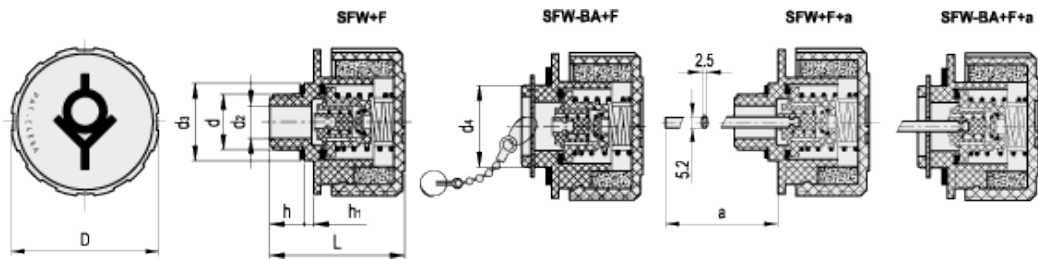


# SFW.

Double-valve pressurised breather caps



ELESA Original design



## technical informations

### Material

Polyamide based (PA) technopolymer. Resistant to solvents, oils, greases and other chemical agents.

- Cover: RAL 2004 orange, semi-matte finish, with graphic symbol "valve".
- Threaded connector: black colour, semi-matte finish.

### Flat packing ring

NBR synthetic rubber.

### Overpressure valve

Technopolymer with NBR synthetic rubber O-ring and stainless steel spring.  
Set at around 0.350 bar (on request 0.700 bar).

### Suction valve

Technopolymer sealing disk with NBR synthetic rubber O-ring and stainless steel spring.  
Set at around 0.030 bar.

### Ring-shaped air filter

"Tech-foam" polyurethane foam mesh (polyester base), air filtration 40  $\mu$ .

### Flat dipstick

Flat section phosphatised steel.

On request and for sufficient quantities dipstick can be supplied in different lengths and/or complete with MAX-MIN level lines.

### Standard executions available

- SFW+F: without fl at dipstick.
- SFW-BA+F: with zinc-plated steel sheet bayonet, without fl at dipstick. Chrome-plated steel safety chain.
- SFW+F+a: without fl at dipstick.
- SFW-BA+F+a: with zinc-plated steel sheet bayonet and fl at dipstick. Chrome-plated steel safety chain.

### Maximum continuous working temperature

100°C.

### Special executions on request

- Black cover.
- Threaded connector also with NPT thread (National Taper pipe Thread - ANSI-ASME B1-20) for the codes marked with # in the table.

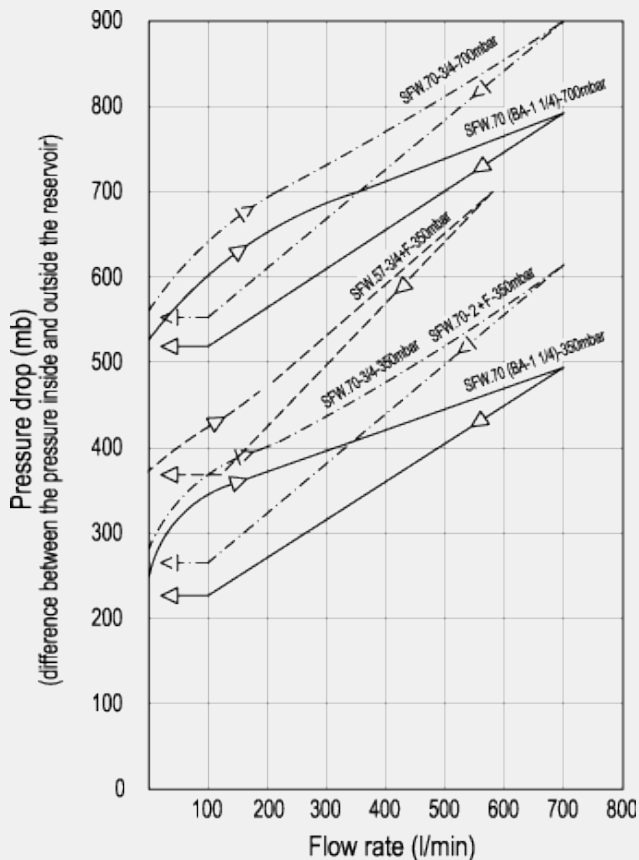
### Features

The use of SFW. pressurised breather caps which create a pressure plenum chamber right above the oil level within tested limit conditions, in order to avoid any reservoir deformation, offers the following advantages:

- reduces reservoir air volume intake keeping clean oil and filter
- improves suction pump action during working conditions reducing cavitation phenomenon
- prevents fluid leakage when the system is part of a mobile unit
- reduces foam in fluid.

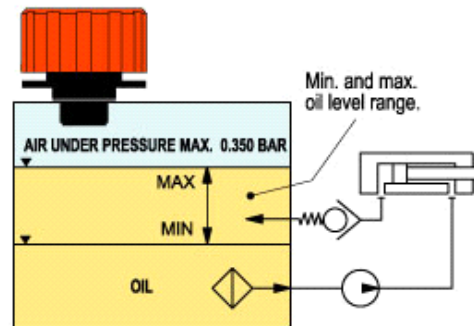
### Technical data

Air flow rate for each model can be determined from the graph calculating the difference between the pressure inside and outside the reservoir.

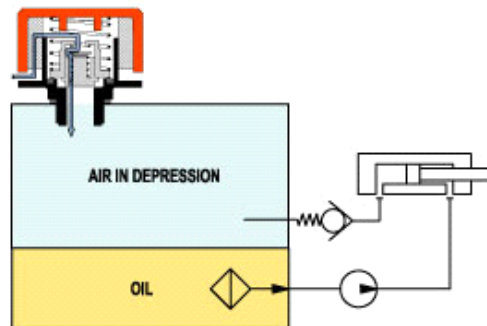




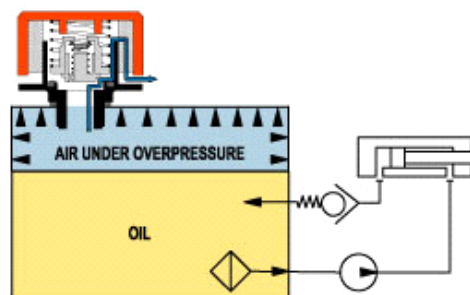
## SFW. pressurised breather cap functioning in a hydraulic circuit



Normal working conditions



When in the reservoir a depression under 0.030 bar is produced, a flux of air entering the reservoir through the suction valve takes place.



When in the reservoir an over pressure exceeding 0.350 (or 0.700) bar is produced, a flux of air is discharged through the safety valve.

Standard Elements		Main dimensions								Weight
Code	Description	d	h	D	L	d <sub>2</sub>	d <sub>3</sub>	d <sub>4</sub>	h <sub>1</sub>	g
54801	SFW.57-3/4+F-350 mb	G 3/4	13	57	48	16	35	-	6	67
54911#	SFW.70-3/4+F-350 mb	G 3/4	15	70	63	16	35	-	6	98
54921	SFW.70-1¼+F-350 mb	G 1¼	17	70	59	25	-	-	-	101

54931	SFW.70-2+F-350 mb	G 2	17	70	59	25	-	-	-	108
54941	SFW.70-BA+F-350 mb	-	14	70	56	25	-	39	-	105

# Types available on request with NPT thread (National Taper pipe Thread - ANSI-ASME B1-20).

Standard Elements		Main dimensions									Weight
Code	Description	d	h	D	L	d <sub>2</sub>	d <sub>3</sub>	d <sub>4</sub>	h <sub>1</sub>	a	g
54913#	SFW.70-3/4+F+a-350 mb	G 3/4	15	70	63	16	35	-	6	188	117
54923	SFW.70-1¼+F+a-350 mb	G 1¼	17	70	59	25	-	-	-	195	120
54943	SFW.70-BA+F+a-350 mb	-	14	70	56	25	-	39	-	195	124

# Types available on request with NPT thread (National Taper pipe Thread - ANSI-ASME B1-20).



ELESA and GANTER models all rights reserved in accordance with the law. Always mention the source when reproducing our drawings.

STANDARD MACHINE ELEMENTS WORLDWIDE